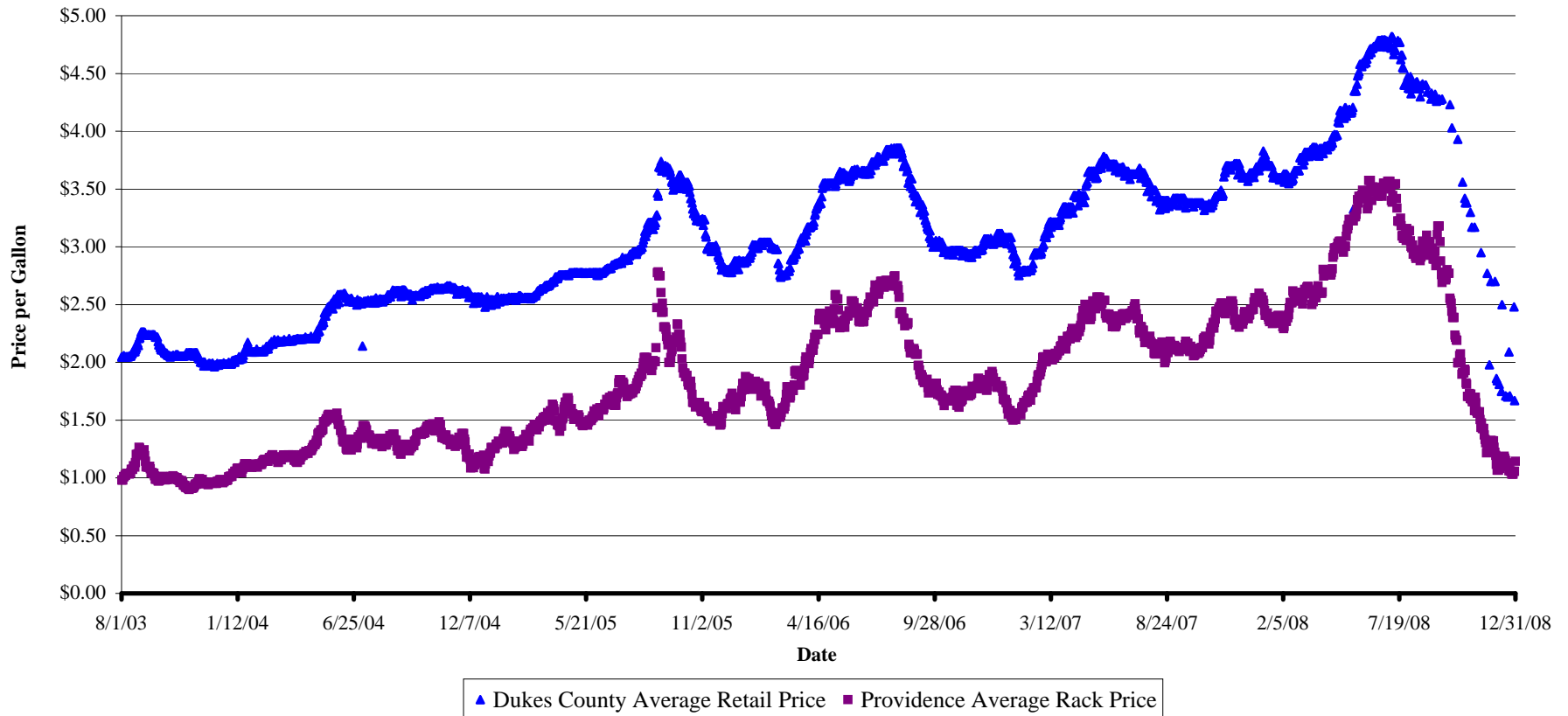


Exhibit 21
William White et al. v. R. M. Packer Company, Inc. et al.
Average Daily Unleaded Regular Retail Price for Dukes County and Providence Average Rack Price
August 2003 - December 2008



Notes: 1. The correlation coefficient for Dukes County Average Retail Price and Providence Average Rack Price is .9745 from August 2003 to July 2008.
 2. The Providence Average Rack Price is the last trading price of the "Bloomberg Regular Gasoline Average Rack Price, Providence, Rhode Island" (ID: RKU4PROV). Non-trading days, such as weekends and holidays, assume the last trading price of the previous active trading day.

Sources: 1. Gas Prices Charted from Defendant Documents.Backup to Gollop Report.pdf; 2. up island 2003 retail gas prices-40287.pdf; 3. up island 2004 retail gas prices-40288.pdf; 4. up island 2005 retail gas prices-40289.pdf; 5. up island 2006 retail gas prices-40291.pdf; 6. up island 2007 retail gas prices-40290.pdf; 7. up island 2008 retail gas prices-40292.pdf; 8. data for Jim's Shell + Airport Service Station.xlsx; 9. Airport Fuel Services Prices.xls; 10. OPIS; 11. Bloomberg (according to Bloomberg, data may be subject to one day lag).