

Service Layer Credits: Sources: Esri, HERE, DeLorme, USGS, Intermap, INCREMENT P, NRCan

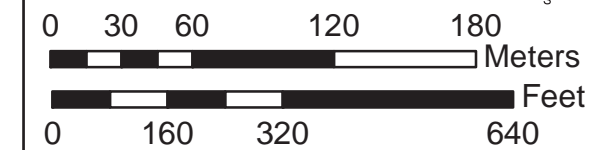
Legend

- RA Boundary
- Tisbury Great Pond MRS Boundary
- Grid / SubGrid

Grid Status

- Geophysical Survey in Progress
- Geophysical Survey Complete
- Target Picked/Awaiting Concurrence
- Target List Concurrence Received
- Subsurface Removal in Progress
- Subsurface Removal Complete

Coordinate System: NAD 1983 2011 UTM Zone 19N
 Map Units: Meters
 Grid North: 0° 57' 39"W
 2015 Magnetic Declination: 14° 46' 48"W
 changing by 0.06° E per year.



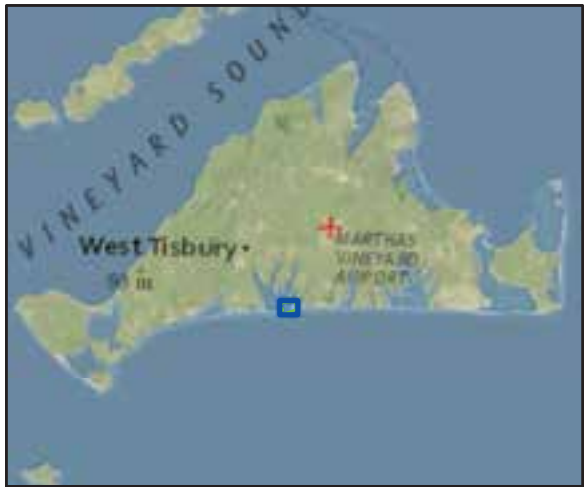
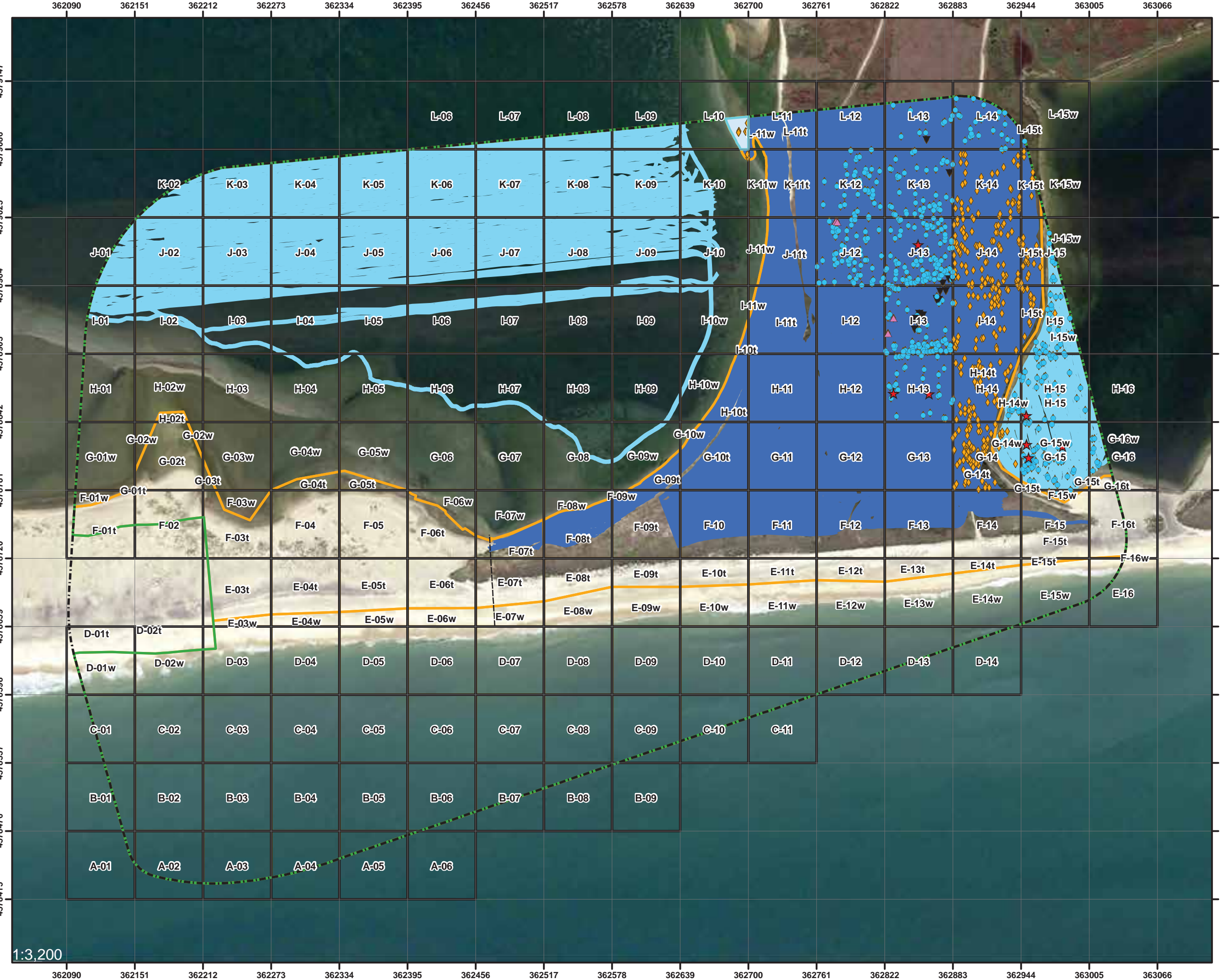
Weekly Status Map (Through 06/10/2017)
Tisbury Great Pond MRS
Remedial Action
Tisbury Great Pond
Martha's Vineyard, MA

Date: 6/14/2017
 Drawn By: alogan



1:3,200
156 total grids, 0 grids submitted for QA, 14 grids completed, 1 grids partially complete, 141 grids remaining

© USGP Tisbury Great Pond RA Progress/Fieldwork/Progress/2017/06/10_TGP_StatusMap.mxd
 11 x 17 landscape 20170610_TGP_StatusMap.pdf



Service Layer Credits: Sources: Esri, HERE, DeLorme, USGS, Intermap, INCREMENT P, NRCan

Legend

- ★ MEC Items (7)
- ▲ MD
- ▼ SAA
- Other (NMRD, Hot Rock, Seed, No Find)
- ◆ Uninvestigated Target
- Marine DGM Survey Coverage
- Land DGM Survey Coverage
- ▭ RA Boundary
- ▭ Tisbury Great Pond MRS Boundary
- ▭ Grid / SubGrid

Coordinate System: NAD 1983 2011 UTM Zone 19N
 Map Units: Meters
 Grid North: 0° 57' 39"W
 2015 Magnetic Declination: 14° 46' 48"W
 changing by 0.06° E per year.

0 30 60 120 180 Meters
 0 160 320 640 Feet

Geophysical Survey Coverage and Anomalies Map (Through 06/10/2017) Tisbury Great Pond MRS Remedial Action Tisbury Great Pond Martha's Vineyard, MA

Date: 6/14/2017
 Drawn By: alogan

1:3,200

**Tisbury Great Pond MRS Summary By Date
Through 10 June 2017**

Date	Grids Worked	Demo Shots	Anomalies Dug (Count)	MEC (Count)	MD (Count)	SAA (Count)	MDAS (lbs.)	NMRD (Count)	NO FIND (Count)	HOT ROCK (Count)	QC SEED (Count)	QA SEED (Count)
6/5/2017	no work	0	0	0	0	0	0	0	0	0	0	0
6/6/2017	J-12, J-13, K-13, L-13, L-15W, J-15W	0	91	0	0	1	0	67	17	1	2	3
6/7/2017	J-12, J-13, K-12, K-13, H-15W	0	182	2	0	4	8	157	15	0	2	2
6/8/2017	H-13, I-13, J-12, J-13, G-15W, H-14W	1	138	5	2	6	24	111	7	0	4	2
6/9/2017	H-13, I-13, L-14, L-15, G-15W, G-16W	0	107	0	3	5	6	75	23	0	1	1
	Totals	1	518	7	5	16	38	410	62	1	9	8

Notes:
 MEC: Munitions and Explosives of Concern NMRD: Non-munitions Related Debris SAD: Small Arms Ammunition (0.50 cal)
 MD: Munitions Debris QA: Quality Assurance
 MDAS: Material Documented as Safe QC: Quality Control